



North East London

City and Hackney Place based Partnership

Working together with City and Hackney Health and Social Care Forum

19 July 2022

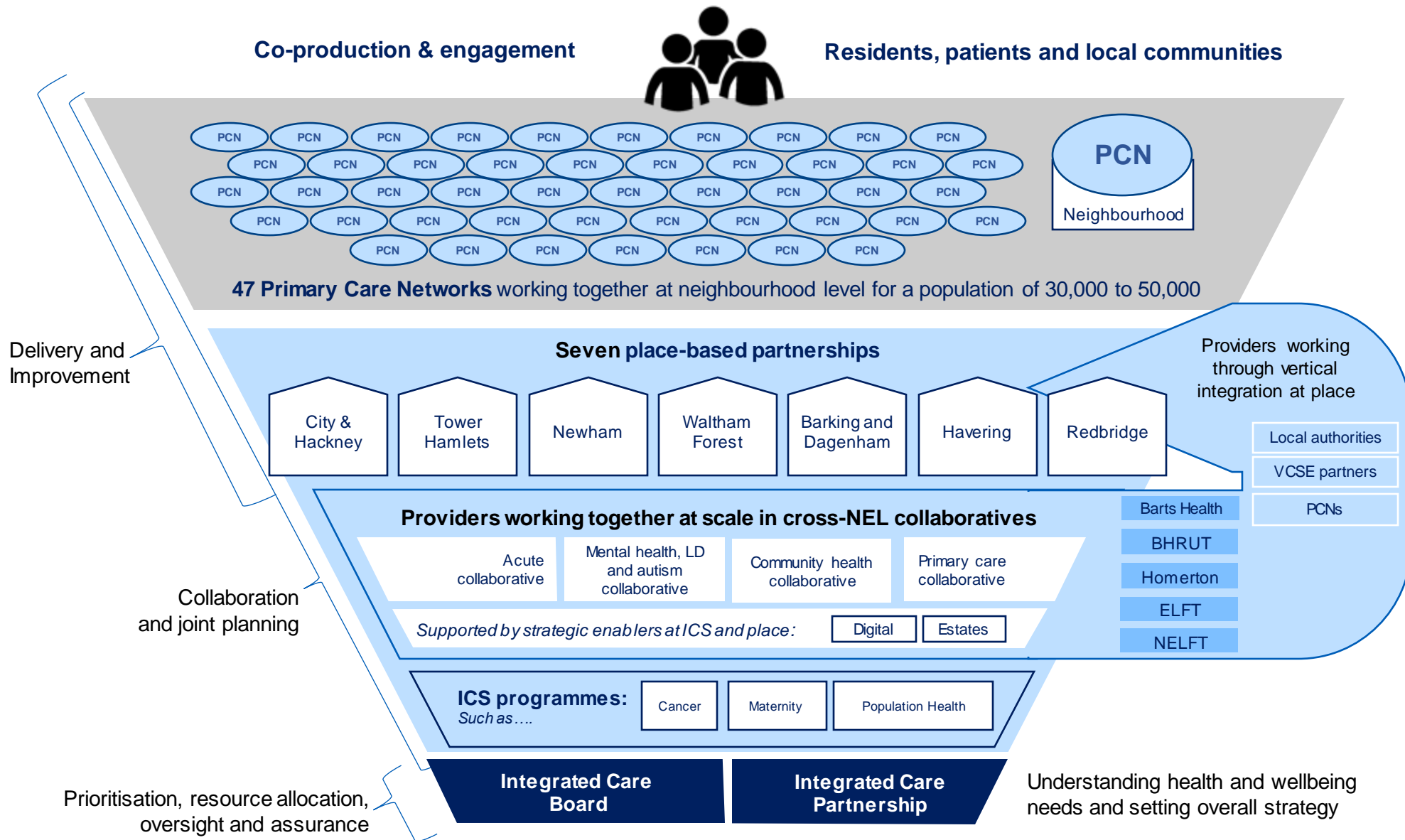
City and Hackney Place based Partnership

Purpose of these slides

- To provide an overview of the latest changes to the NHS and what these look like in City and Hackney
- To outline the priorities for City and Hackney partnership
- To share information about how you can get involved
- To hear your views on how we can work together going forward

NHS North East London

- On July 1st this year, NHS North East London Clinical Commissioning Group (CCG) was replaced by a new organisation with slightly different powers and responsibilities, NHS North East London Integrated Care Board (ICB).
- The new organisation will be known as [NHS North East London](#). The [ICB](#) will enable and support the work of the [Integrated Care System](#).
- **All of the NHS organisations who currently provide health services in North East London, and in City and Hackney (such as hospitals, mental health trusts and GP practices) remain unchanged, and the health services they currently provide to patients remain unchanged.**
- NHS NEL is committed to working in partnership with local communities including at senior leadership level.

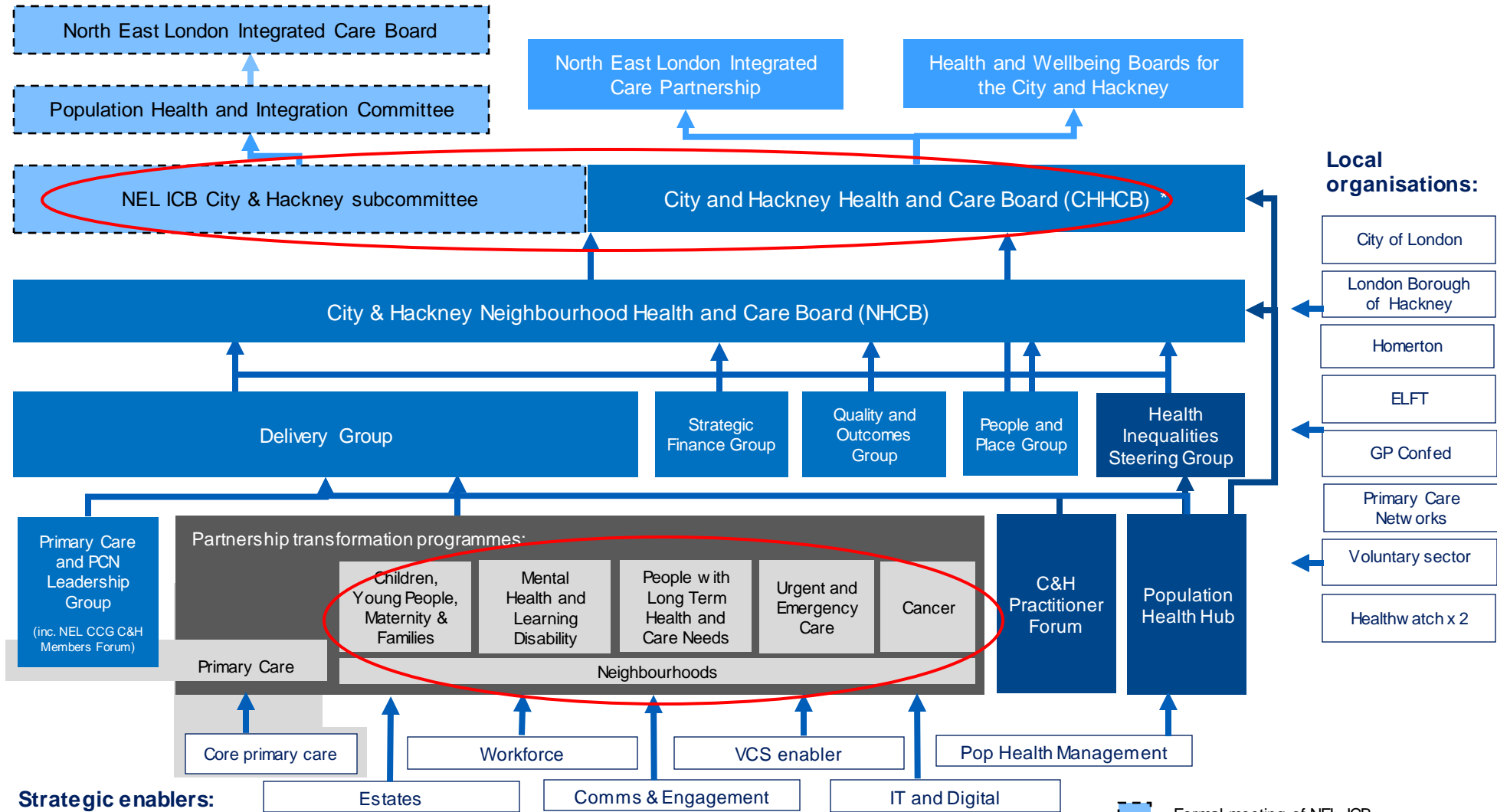


How the new Integrated Care System will operate in North East London

City and Hackney Place based Partnership

- City and Hackney senior level board will soon be called **City and Hackney Health and Care Board (CHHCB)**.
- Partners in City and Hackney have developed a set of strategic priorities that will guide our work going forward. These are included in the slides below.
- The key senior leadership roles for City and Hackney are
 - Homerton CEO (Louise Ashley)
 - Partnership Clinical Lead (Stephanie Coughlin)
 - Partnership Delivery Director (Nina Griffith).

City and Hackney's proposed Place-based Partnership governance within NEL ICS



Strategic enablers:

- The **City and Hackney Health and Care Board** operates under a 'committees in common' structure with sub-committees from both the City of London Corporation and the London Borough of Hackney, allowing for delegated decision making for pooled budgets.
- Red circle highlights changes post 1st July

- = Formal meeting of NEL ICB relating to City and Hackney PBP
- = Formal meeting of the City and Hackney Place-based Partnership
- = Support meeting / function to the City and Hackney Place-based Partnership

City and Hackney priorities

“Working together with our residents to improve health and care, address health inequalities and make City and Hackney thrive”

Our population health priority outcome areas:

Giving every child the best start in life
(often by recognising the role of families)

Improving mental health and preventing mental ill-health

Improving outcomes for people with long-term health and care needs

The cross-cutting approaches we will take to do this:

Increasing social connection

Ensuring healthy local places


Supporting greater financial wellbeing


Joining up local health and care services around residents and families' needs


Taking effective action to address racism and other discrimination


Supporting the health and care workforce

These priorities are drawn from local Health and Wellbeing Strategies and priorities of the wider ICS:

 =Hackney HWB focus area

 = Hackney HWB specific 'lenses': (approaches to reduce health inequalities)

 = NEL ICS four partnership priority areas

 = reflecting long term C&H partnership ambitions

How Health and Social Care Forum and the wider VCS are involved

How to get involved

- As a key partner in the Place based Partnership through Health and Social Care Forum, Networks, VCS Leadership Group and Special Interest Groups (SIG)
- Attending meetings like the [Neighbourhood Forums](#) that bring together services, VCS groups and residents of a particular area in City and Hackney
- Becoming a public health community champion
- Sharing insight with City and Hackney Community Voice (we want to get better at acknowledging and crediting organisations who share insight with us and recognise this as intellectual capital)
- Contributing to ongoing engagement and consultations
- Encouraging people to sign up to [Citizens Panel](#)

How to stay informed

- Information is circulated via HCVS, Health and Social Care Forum and SIGs
- NHS NEL public facing bulletin
- City and Hackney [Neighbourhoods website and newsletter](#)
- Attending local meetings
- To be discussed at today's meeting...

Examples of ongoing work

- NEL Engagement Strategy and development of NEL/ City and Hackney VCS Alliance
- Identifying the right council and NHS representation to attend Health and Social Care Forum and SIG meetings
- City and Hackney Engagement Review and the development of a local strategy and a model
- City and Hackney Co-Production Charter
- Ongoing development of the City and Hackney Neighbourhoods Model
- Engagement ongoing or about to start for
 - Fertility Policy
 - Continuing Healthcare Policy
 - Community Diagnostics Centres
 - People's experiences of mental health services
 - Covid-19 vaccination programme and flu vaccination programme
- Recruitment of System Influencers
- City and Hackney Communications and Engagement Fund for transforming the way we involve and inform local communities

Questions and comments

- What is the best way to share information with you and your organisation?
- How can we ensure the voice of VCS organisations is heard and noted?
- Do you think there are accessible ways for local residents and VCS organisations to have their say?

Thank you!

Anything else you would like to share or ask? You can contact the City and Hackney Communications and Engagement Team at cah.communications@nhs.net